

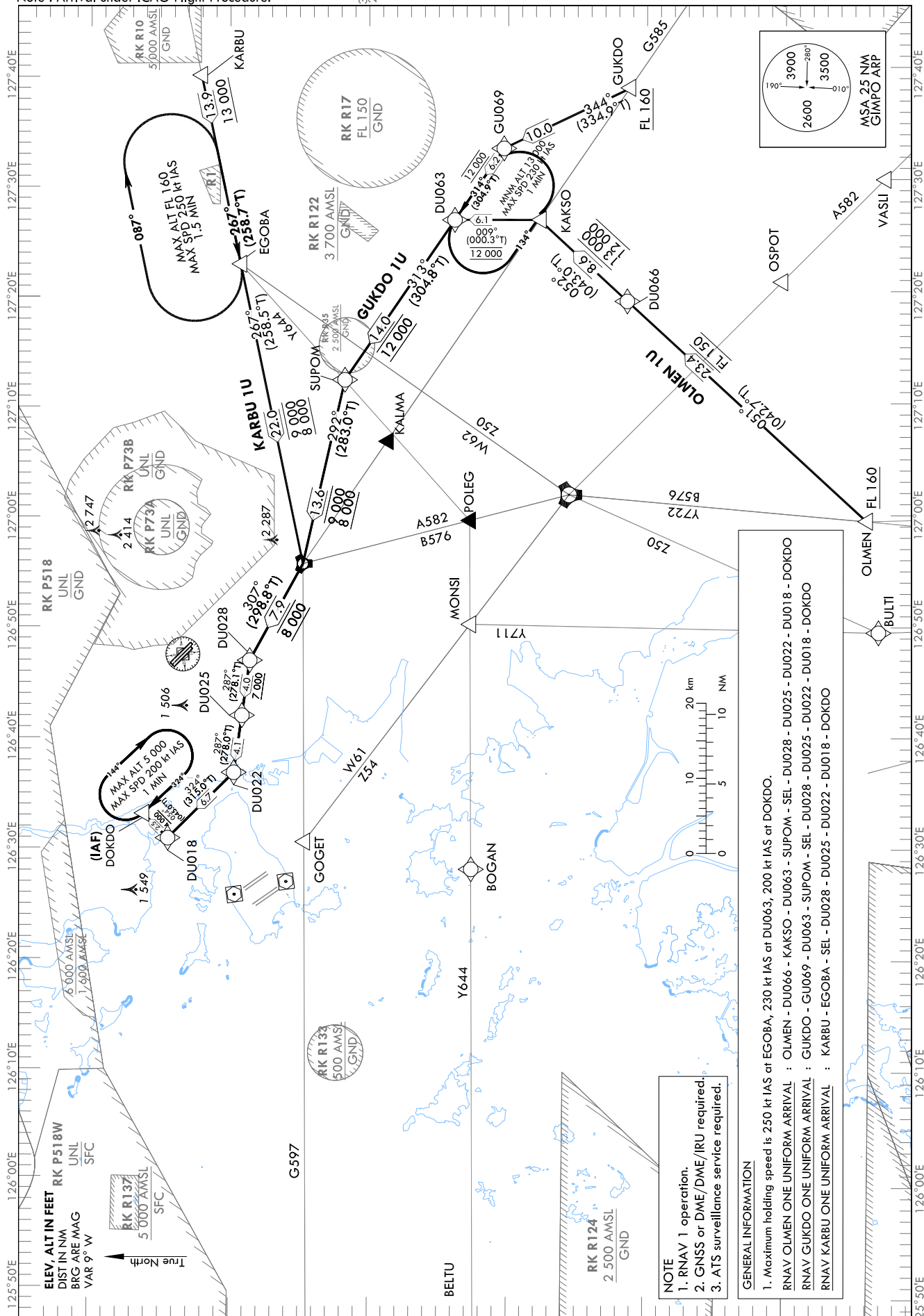
STANDARD ARRIVAL CHART
INSTRUMENT (STAR) - ICAO

TRANSITION ALT 14 000
TRANSITION LVL FL 140

SEOUL APP 119.75
119.1
GIMPO TWR 118.1
118.05

SEOUL/Gimpo Intl(RKSS)
RWY 14L/R
RNAV OLMEN 1U
RNAV GUKDO 1U, RNAV KARBU 1U

Note : Arrival under ICAO Flight Procedure.



NOTE
1. RNAV 1 operation.
2. GNSS or DME/DME/IRU required.
3. ATS surveillance service required.

GENERAL INFORMATION
1. Maximum holding speed is 250 kt IAS at EGOBA, 230 kt IAS at DU063, 200 kt IAS at DOKDO.
RNAV OLMEN ONE UNIFORM ARRIVAL : OLMEN - DU066 - KAKSO - DU063 - SUPOM - SEL - DU028 - DU025 - DU022 - DU018 - DOKDO
RNAV GUKDO ONE UNIFORM ARRIVAL : GUKDO - GU069 - DU063 - SUPOM - SEL - DU028 - DU025 - DU022 - DU018 - DOKDO
RNAV KARBU ONE UNIFORM ARRIVAL : KARBU - EGOBA - SEL - DU028 - DU025 - DU022 - DU018 - DOKDO

Change : Page control.

SEOUL/Gimpo Intl(RKSS)
RWY 14L/R
RNAV OLMEN 1U, RNAV GUKDO 1U

AERONAUTICAL DATA TABULATION

Standard Instrument Arrival Procedure Coding Tables

Serial Number	Path Descriptor	Waypoint Identifier	Fly-over	Course/Track °M(°T)	Distance (NM)	Turn direction	Altitude (ft)	Speed (kt)	Coordinates	VPA/RDH	Navigation specification	Remarks
001	IF	OLMEN	-	-	-	-	+FL 160	-	36°44'13.4"N 126°59'27.6"E	-	RNAV 1	-
002	TF	DU066	-	051 (042.7)	23.4	-	@FL 150	-	37°01'25.6"N 127°19'16.4"E	-	RNAV 1	-
003	TF	KAKSO	-	052 (043.0)	8.6	-	-13 000 +12 000	-250	37°07'44.6"N 127°26'37.4"E	-	RNAV 1	Bank angle 25°
004	TF	DU063	-	009 (000.3)	6.1	-	@12 000	-250	37°13'49.2"N 127°26'39.5"E	-	RNAV 1	Bank angle 25°
005	TF	SUPOM	-	313 (304.8)	14.0	-	@12 000	-250	37°21'46.7"N 127°12'17.2"E	-	RNAV 1	-
006	TF	SEL	-	292 (283.0)	13.6	-	-9 000 +8 000	-	37°24'49.0"N 126°55'42.1"E	-	RNAV 1	-
007	TF	DU028	-	307 (298.8)	7.9	-	@8 000	-	37°28'38.4"N 126°46'58.6"E	-	RNAV 1	-
008	TF	DU025	-	287 (278.1)	4.0	-	+7 000	-	37°29'12.0"N 126°42'00.0"E	-	RNAV 1	-
009	TF	DU022	-	287 (278.0)	4.1	-	-	-	37°29'46.6"N 126°36'50.4"E	-	RNAV 1	-
010	TF	DU018	-	324 (315.0)	6.7	-	-	-220	37°34'30.9"N 126°30'53.6"E	-	RNAV 1	-
011	TF	DOKDO	-	054 (045.0)	2.5	-	+4 000	-220	37°36'17.1"N 126°33'07.1"E	-	RNAV 1	IAF

Serial Number	Path Descriptor	Waypoint Identifier	Fly-over	Course/Track °M(°T)	Distance (NM)	Turn direction	Altitude (ft)	Speed (kt)	Coordinates	VPA/RDH	Navigation specification	Remarks
001	IF	GUKDO	-	-	-	-	+FL 160	-	37°01'10.9"N 127°38'22.6"E	-	RNAV 1	-
002	TF	GU069	-	344 (334.9)	10.0	-	-	-250	37°10'14.9"N 127°33'04.6"E	-	RNAV 1	-
003	TF	DU063	-	314 (304.9)	6.2	-	@12 000	-250	37°13'49.2"N 127°26'39.5"E	-	RNAV 1	-
004	TF	SUPOM	-	313 (304.8)	14.0	-	@12 000	-250	37°21'46.7"N 127°12'17.2"E	-	RNAV 1	-
005	TF	SEL	-	292 (283.0)	13.6	-	-9 000 +8 000	-	37°24'49.0"N 126°55'42.1"E	-	RNAV 1	-
006	TF	DU028	-	307 (298.8)	7.9	-	@8 000	-	37°28'38.4"N 126°46'58.6"E	-	RNAV 1	-
007	TF	DU025	-	287 (278.1)	4.0	-	+7 000	-	37°29'12.0"N 126°42'00.0"E	-	RNAV 1	-
008	TF	DU022	-	287 (278.0)	4.1	-	-	-	37°29'46.6"N 126°36'50.4"E	-	RNAV 1	-
009	TF	DU018	-	324 (315.0)	6.7	-	-	-220	37°34'30.9"N 126°30'53.6"E	-	RNAV 1	-
010	TF	DOKDO	-	054 (045.0)	2.5	-	+4 000	-220	37°36'17.1"N 126°33'07.1"E	-	RNAV 1	IAF

Change : Page control.

AERONAUTICAL DATA TABULATION

Standard Instrument Arrival Procedure Coding Tables

Serial Number	Path Descriptor	Waypoint Identifier	Fly-over	Course/Track M(T)	Distance (NM)	Turn direction	Altitude (ft)	Speed (kt)	Coordinates	VPA/RDH	Navigation specification	Remarks
001	IF	KARBU	-	-	-	-	-	-	37°31'59.0"N 127°39'52.0"E	-	RNAV 1	-
002	TF	EGOBA	-	267 (258.7)	13.9	-	+13 000	-250	37°29'14.7"N 127°22'45.9"E	-	RNAV 1	-
003	TF	SEL	-	267 (258.5)	22.0	-	-9 000 +8 000	-	37°24'49.0"N 126°55'42.1"E	-	RNAV 1	-
004	TF	DU028	-	307 (298.8)	7.9	-	@8 000	-	37°28'38.4"N 126°46'58.6"E	-	RNAV 1	-
005	TF	DU025	-	287 (278.1)	4.0	-	+7 000	-	37°29'12.0"N 126°42'00.0"E	-	RNAV 1	-
006	TF	DU022	-	287 (278.0)	4.1	-	-	-	37°29'46.6"N 126°36'50.4"E	-	RNAV 1	-
007	TF	DU018	-	324 (315.0)	6.7	-	-	-220	37°34'30.9"N 126°30'53.6"E	-	RNAV 1	-
008	TF	DOKDO	-	054 (045.0)	2.5	-	+4 000	-220	37°36'17.1"N 126°33'07.1"E	-	RNAV 1	IAF

HOLDING PROCEDURE

Holding Identification	Path Descriptor	Waypoint Identifier	Fly-over	Course/Track M(T)	Time (min)	Turn direction	Altitude (ft)	Speed (kt)	Coordinates	VPA/RDH	Navigation specification	Remarks
RNAV OLMEN 1U	-	DU063	Y	314 (304.9)	1.0	L	+13 000	-230	37°13'49.2"N 127°26'39.5"E	-	RNAV 1	-
	-	DOKDO	Y	324 (314.9)	1.0	R	-5 000 +4 000	-200	37°36'17.1"N 126°33'07.1"E	-	RNAV 1	-
RNAV GUKDO 1U	-	DU063	Y	314 (304.9)	1.0	L	+13 000	-230	37°13'49.2"N 127°26'39.5"E	-	RNAV 1	-
	-	DOKDO	Y	324 (314.9)	1.0	R	-5 000 +4 000	-200	37°36'17.1"N 126°33'07.1"E	-	RNAV 1	-
RNAV KARBU 1U	-	EGOBA	Y	267 (258.7)	1.5	R	-FL 160	-250	37°29'14.7"N 127°22'45.9"E	-	RNAV 1	-
	-	DOKDO	Y	324 (314.9)	1.0	R	-5 000 +4 000	-200	37°36'17.1"N 126°33'07.1"E	-	RNAV 1	-

INTENTIONALLY

LEFT

BLANK

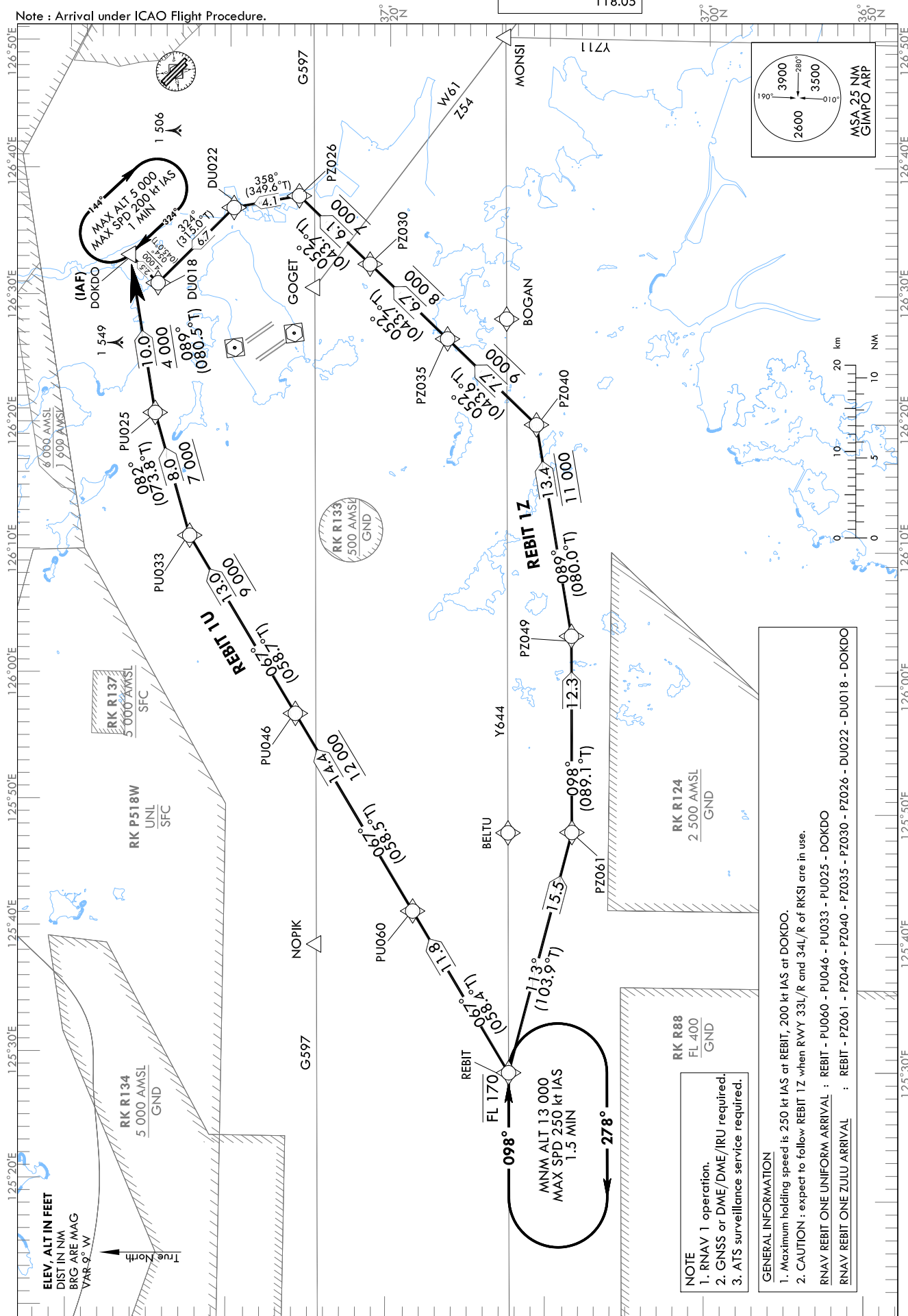
STANDARD ARRIVAL CHART
INSTRUMENT (STAR) - ICAO

TRANSITION ALT 14 000
TRANSITION LVL FL 140

SEOUL APP 119.75
119.1
GIMPO TWR 118.1
118.05

SEOUL/Gimpo Intl(RKSS)
RWY 14L/R
RNAV REBIT 1U, RNAV REBIT 1Z

Note : Arrival under ICAO Flight Procedure.



NOTE
1. RNAV 1 operation.
2. GNSS or DME/DME/IRU required.
3. ATIS surveillance service required.

GENERAL INFORMATION
1. Maximum holding speed is 250 kt IAS at REBIT, 200 kt IAS at DOKDO.
2. CAUTION : expect to follow REBIT 1Z when RWY 33L/R and 34L/R of RKSI are in use.
RNAV REBIT ONE UNIFORM ARRIVAL : REBIT - PU060 - PU046 - PU033 - PU025 - DOKDO
RNAV REBIT ONE ZULU ARRIVAL : REBIT - PZ061 - PZ049 - PZ040 - PZ035 - PZ030 - PZ026 - DU022 - DU018 - DOKDO

Change : Page control.

SEOUL/Gimpo Intl(RKSS)
RWY 14L/R
RNAV REBIT 1U, RNAV REBIT 1Z

AERONAUTICAL DATA TABULATION

Standard Instrument Arrival Procedure Coding Tables

RNAV REBIT 1U										
Serial Number	Path Descriptor	Waypoint Identifier	Fly-over	Course/Track °M(°T)	Distance (NM)	Turn direction	Altitude (ft)	Speed (kt)	Coordinates	Remarks
001	IF	REBIT	-	-	-	-	-FL 170	-	37°12'03.0"N 125°29'12.7"E	-
002	TF	PU060	-	067 (058.4)	11.8	-	-	-	37°18'12.6"N 125°41'46.1"E	-
003	TF	PU046	-	067 (058.5)	14.4	-	+12 000	-	37°25'42.2"N 125°57'09.0"E	-
004	TF	PU033	-	067 (058.7)	13.0	-	+9 000	-	37°32'26.0"N 126°11'04.0"E	-
005	TF	PU025	-	082 (073.8)	8.0	-	+7 000	-	37°34'39.1"N 126°20'42.3"E	-
006	TF	DOKDO	-	089 (080.5)	10.0	-	+4 000	-	37°36'17.1"N 126°33'07.1"E	IAF

RNAV REBIT 1Z										
Serial Number	Path Descriptor	Waypoint Identifier	Fly-over	Course/Track °M(°T)	Distance (NM)	Turn direction	Altitude (ft)	Speed (kt)	Coordinates	Remarks
001	IF	REBIT	-	-	-	-	-FL 170	-	37°12'03.0"N 125°29'12.7"E	-
002	TF	PZ061	-	113 (103.9)	15.5	-	-	-	37°08'17.9"N 125°48'04.6"E	-
003	TF	PZ049	-	098 (089.1)	12.3	-	-	-	37°08'28.1"N 126°03'25.2"E	-
004	TF	PZ040	-	089 (080.0)	13.4	-	@11 000	-	37°10'46.2"N 126°19'55.9"E	-
005	TF	PZ035	-	052 (043.6)	7.7	-	+9 000	-	37°16'22.3"N 126°26'36.8"E	-
006	TF	PZ030	-	052 (043.7)	6.7	-	+8 000	-	37°21'14.9"N 126°32'26.8"E	-
007	TF	PZ026	-	052 (043.7)	6.1	-	+7 000	-	37°25'41.7"N 126°37'46.9"E	-
008	TF	DU022	-	358 (349.6)	4.1	-	-	-	37°29'46.6"N 126°36'50.4"E	-
009	TF	DU018	-	324 (315.0)	6.7	-	-	-220	37°34'30.9"N 126°30'53.6"E	-
010	TF	DOKDO	-	054 (045.0)	2.5	-	+4 000	-220	37°36'17.1"N 126°33'07.1"E	IAF

HOLDING PROCEDURE										
Holding Identification	Path Descriptor	Waypoint Identifier	Fly-over	Course/Track °M(°T)	Time (min)	Turn direction	Altitude (ft)	Speed (kt)	Coordinates	Remarks
RNAV REBIT 1U	-	REBIT	Y	098 (089.1)	1.5	R	+13 000	-250	37°12'03.0"N 125°29'12.7"E	-
	-	DOKDO	Y	324 (314.9)	1.0	R	-5 000 +4 000	-200	37°36'17.1"N 126°33'07.1"E	-
RNAV REBIT 1Z	-	REBIT	Y	098 (089.1)	1.5	R	+13 000	-250	37°12'03.0"N 125°29'12.7"E	-
	-	DOKDO	Y	324 (314.9)	1.0	R	-5 000 +4 000	-200	37°36'17.1"N 126°33'07.1"E	-

Change : Page control.

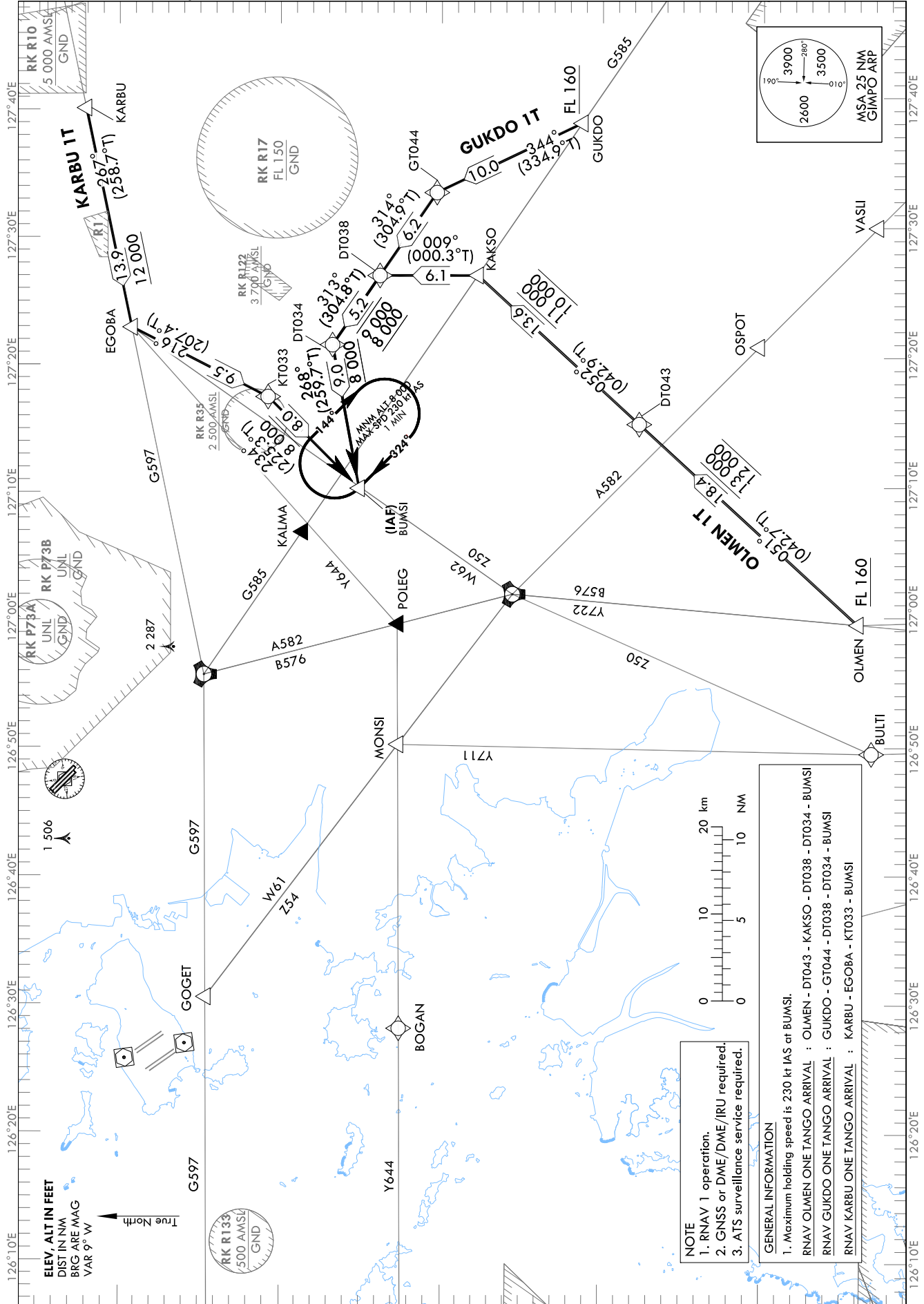
STANDARD ARRIVAL CHART
INSTRUMENT (STAR) - ICAO

TRANSITION ALT 14 000
TRANSITION LVL FL 140

SEOUL APP 119.75
119.1
GIMPO TWR 118.1
118.05

SEOUL/Gimpo Intl(RKSS)
RWY 32L/R
RNAV OLMEN 1T
RNAV GUKDO 1T, RNAV KARBU 1T

Note : Arrival under ICAO Flight Procedure.



Change : Page control.

SEOUL/Gimpo Intl(RKSS)

RWY 32L/R

RNAV OLMEN 1T

RNAV GUKDO 1T, RNAV KARBU 1T

AERONAUTICAL DATA TABULATION

Standard Instrument Arrival Procedure Coding Tables

Serial Number	Path Descriptor	Waypoint Identifier	Fly-over	Course/Track °M(°T)	Distance (NM)	Turn direction	Altitude (ft)	Speed (kt)	Coordinates	VPA/RDH	Navigation specification	Remarks
001	IF	OLMEN	-	-	-	-	+F1 160	-	36°44'13.4"N 126°59'27.6"E	-	RNAV 1	-
002	TF	DT043	-	051 (042.7)	18.4	-	-13 000 +12 000	-	36°57'45.7"N 127°15'01.2"E	-	RNAV 1	-
003	TF	KAKSO	-	052 (042.9)	13.6	-	-11 000 +10 000	-250	37°07'44.6"N 127°26'37.4"E	-	RNAV 1	Bank angle 25°
004	TF	DT038	-	009 (000.3)	6.1	-	-	-250	37°13'49.2"N 127°26'39.5"E	-	RNAV 1	Bank angle 25°
005	TF	DT034	-	313 (304.8)	5.2	-	-9 000 +8 000	-250	37°16'47.4"N 127°21'18.3"E	-	RNAV 1	Bank angle 25°
006	TF	BUMSI	-	268 (259.7)	9.0	-	+8 000	-	37°15'10.2"N 127°10'09.6"E	-	RNAV 1	IAF

RNAV GUKDO 1T

Serial Number	Path Descriptor	Waypoint Identifier	Fly-over	Course/Track °M(°T)	Distance (NM)	Turn direction	Altitude (ft)	Speed (kt)	Coordinates	VPA/RDH	Navigation specification	Remarks
001	IF	GUKDO	-	-	-	-	+F1 160	-	37°01'10.9"N 127°38'22.9"E	-	RNAV 1	-
002	TF	GT044	-	344 (334.9)	10.0	-	-	-250	37°10'14.9"N 127°33'04.6"E	-	RNAV 1	-
003	TF	DT038	-	314 (304.9)	6.2	-	-	-250	37°13'49.2"N 127°26'39.5"E	-	RNAV 1	-
004	TF	DT034	-	313 (304.8)	5.2	-	-9 000 +8 000	-250	37°16'47.4"N 127°21'18.3"E	-	RNAV 1	-
005	TF	BUMSI	-	268 (259.7)	9.0	-	+8 000	-	37°15'10.2"N 127°10'09.6"E	-	RNAV 1	IAF

RNAV KARBU 1T

Serial Number	Path Descriptor	Waypoint Identifier	Fly-over	Course/Track °M(°T)	Distance (NM)	Turn direction	Altitude (ft)	Speed (kt)	Coordinates	VPA/RDH	Navigation specification	Remarks
001	IF	KARBU	-	-	-	-	-	-	37°31'59.0"N 127°39'52.0"E	-	RNAV 1	-
002	TF	EG08A	-	267 (258.7)	13.9	-	+12 000	-250	37°29'14.7"N 127°22'45.9"E	-	RNAV 1	-
003	TF	KT033	-	216 (207.4)	9.5	-	-	-250	37°20'48.4"N 127°17'17.1"E	-	RNAV 1	-
004	TF	BUMSI	-	234 (225.3)	8.0	-	+8 000	-	37°15'10.2"N 127°10'09.6"E	-	RNAV 1	IAF

HOLDING PROCEDURE

Holding Identification	Path Descriptor	Waypoint Identifier	Fly-over	Course/Track °M(°T)	Distance (NM)	Turn direction	Time (min)	Altitude (ft)	Speed (kt)	Coordinates	VPA/RDH	Navigation specification	Remarks
RNAV OLMEN 1T	HM	BUMSI	Y	324 (315.2)	1.0	R	1.0	+8 000	-230	37°15'10.2"N 127°10'09.6"E	-	RNAV 1	-
RNAV GUKDO 1T	HM	BUMSI	Y	324 (315.2)	1.0	R	1.0	+8 000	-230	37°15'10.2"N 127°10'09.6"E	-	RNAV 1	-
RNAV KARBU 1T	HM	BUMSI	Y	324 (315.2)	1.0	R	1.0	+8 000	-230	37°15'10.2"N 127°10'09.6"E	-	RNAV 1	-

Change : Page control.

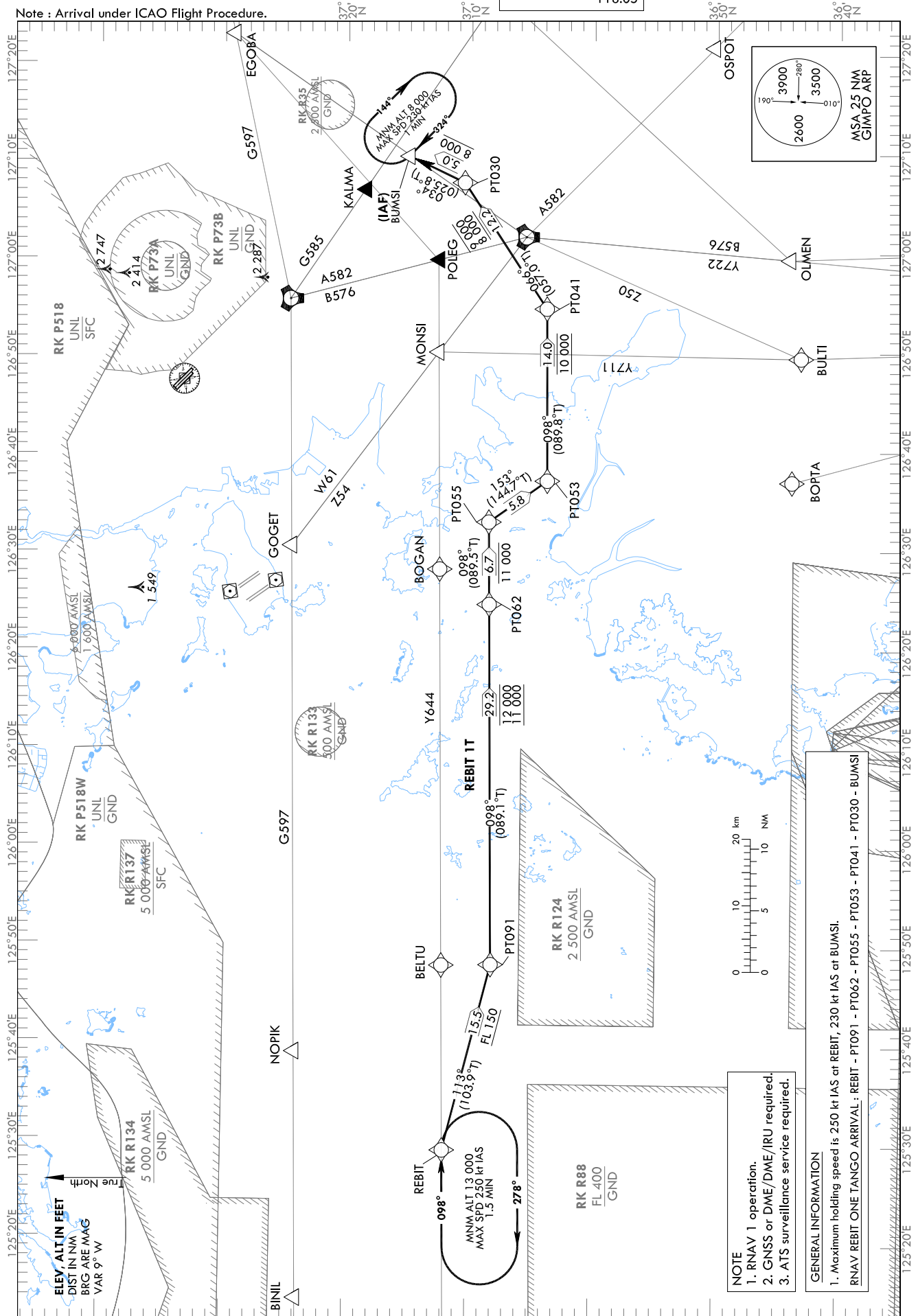
STANDARD ARRIVAL CHART
INSTRUMENT (STAR) - ICAO

TRANSITION ALT 14 000
TRANSITION LVL FL 140

SEOUL	APP	119.75
		119.1
GIMPO	TWR	118.1
		118.05

SEOUL/Gimpo Intl(RKSS)
RWY 32L/R
RNAV REBIT 1T

Note : Arrival under ICAO Flight Procedure.



Change : Page control.

SEOUL/Gimpo Intl(RKSS)
RWY 32L/R
RNAV REBIT 1T

AERONAUTICAL DATA TABULATION

Standard Instrument Arrival Procedure Coding Tables

Serial Number	Path Descriptor	Waypoint Identifier	Fly-over	Course/Track °M(°T)	Distance (NM)	Turn direction	Altitude (ft)	Speed (kt)	Coordinates	VPA/RDH	Navigation specification	Remarks
001	IF	REBIT	-	-	-	-	-	-	37°12'03.0"N 125°29'12.7"E	-	RNAV 1	-
002	TF	PT091	-	113 (103.9)	15.5	-	+FL 150	-	37°08'17.9"N 125°48'04.6"E	-	RNAV 1	-
003	TF	PT062	-	098 (089.1)	29.2	-	-12 000 +11 000	-	37°08'38.9"N 126°24'37.4"E	-	RNAV 1	-
004	TF	PT055	-	098 (089.5)	6.7	-	-11 000	-	37°08'42.1"N 126°32'59.3"E	-	RNAV 1	-
005	TF	PT053	-	153 (144.7)	5.8	-	-	-	37°03'58.4"N 126°37'09.6"E	-	RNAV 1	-
006	TF	PT041	-	098 (089.8)	14.0	-	@10 000	-	37°04'00.5"N 126°54'36.0"E	-	RNAV 1	-
007	TF	PT030	-	066 (057.0)	12.2	-	-9 000 +8 000	-	37°10'39.8"N 127°07'26.2"E	-	RNAV 1	-
008	TF	BUMSI	-	034 (025.8)	5.0	-	+8 000	-	37°15'10.2"N 127°10'09.6"E	-	RNAV 1	IAF

HOLDING PROCEDURE

Holding Identification	Path Descriptor	Waypoint Identifier	Fly-over	Course/Track °M(°T)	Time (min)	Turn direction	Altitude (ft)	Speed (kt)	Coordinates	VPA/RDH	Navigation specification	Remarks
RNAV REBIT 1T	HM	REBIT	Y	098 (089.1)	1.5	R	+13 000	-250	37°12'03.0"N 125°29'12.7"E	-	RNAV 1	-
	HM	BUMSI	Y	324 (315.2)	1.0	R	+8 000	-230	37°15'10.2"N 127°10'09.6"E	-	RNAV 1	-

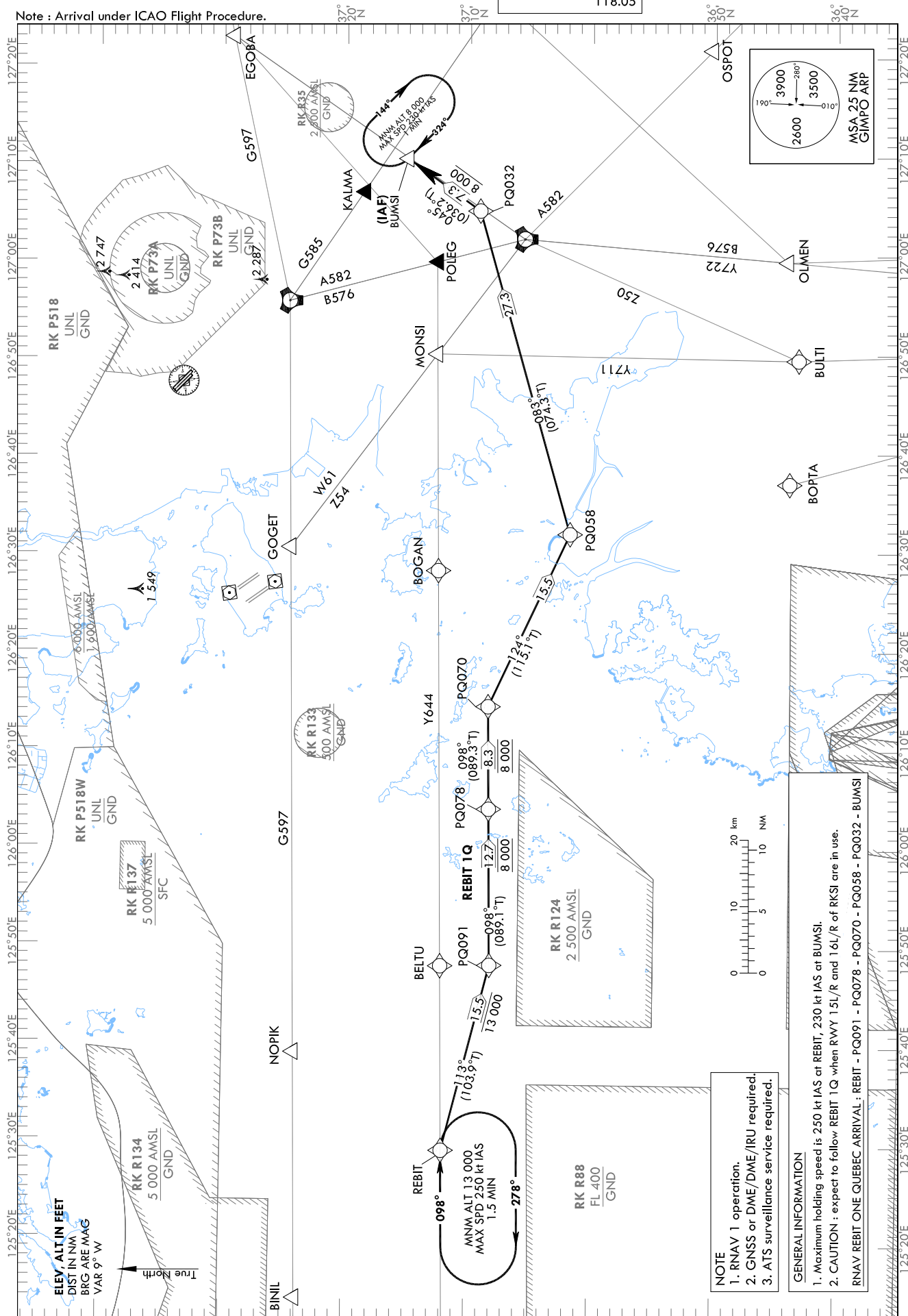
STANDARD ARRIVAL CHART
INSTRUMENT (STAR) - ICAO

TRANSITION ALT 14 000
TRANSITION LVL FL 140

SEOUL	APP	119.75
		119.1
GIMPO	TWR	118.1
		118.05

SEOUL/Gimpo Intl(RKSS)
RWY 32L/R
RNAV REBIT 1Q

Note : Arrival under ICAO Flight Procedure.



Change : Page control.

SEOUL/Gimpo Intl(RKSS)
RWY 32L/R
RNAV REBIT 1Q

AERONAUTICAL DATA TABULATION

Standard Instrument Arrival Procedure Coding Tables

Serial Number	Path Descriptor	Waypoint Identifier	Fly-over	Course/Track °M(°T)	Distance (NM)	Turn direction	Altitude (ft)	Speed (kt)	Coordinates	VPA/RDH	Navigation specification	Remarks
001	IF	REBIT	-	-	-	-	-	-	37°12'03.0"N 125°29'12.7"E	-	RNAV 1	-
002	TF	PQ091	-	113 (103.9)	15.5	-	-13 000	-	37°08'17.9"N 125°48'04.6"E	-	RNAV 1	-
003	TF	PQ078	-	098 (089.1)	12.7	-	@8 000	-	37°08'28.4"N 126°03'57.4"E	-	RNAV 1	-
004	TF	PQ070	-	098 (089.3)	8.3	-	@8 000	-	37°08'34.2"N 126°14'23.0"E	-	RNAV 1	-
005	TF	PQ058	-	124 (115.1)	15.5	-	-	-	37°01'58.7"N 126°31'54.3"E	-	RNAV 1	-
006	TF	PQ032	-	083 (074.3)	27.3	-	-	-	37°09'17.5"N 127°04'47.1"E	-	RNAV 1	-
007	TF	BUMSI	-	045 (036.2)	7.3	-	+8 000	-	37°15'10.2"N 127°10'09.6"E	-	RNAV 1	IAF

HOLDING PROCEDURE

Holding Identification	Path Descriptor	Waypoint Identifier	Fly-over	Course/Track °M(°T)	Time (min)	Turn direction	Altitude (ft)	Speed (kt)	Coordinates	VPA/RDH	Navigation specification	Remarks
RNAV REBIT 1Q	HM	REBIT	Y	098 (089.1)	1.5	R	+13 000	-250	37°12'03.0"N 125°29'12.7"E	-	RNAV 1	-
	HM	BUMSI	Y	324 (315.2)	1.0	R	+8 000	-230	37°15'10.2"N 127°10'09.6"E	-	RNAV 1	-

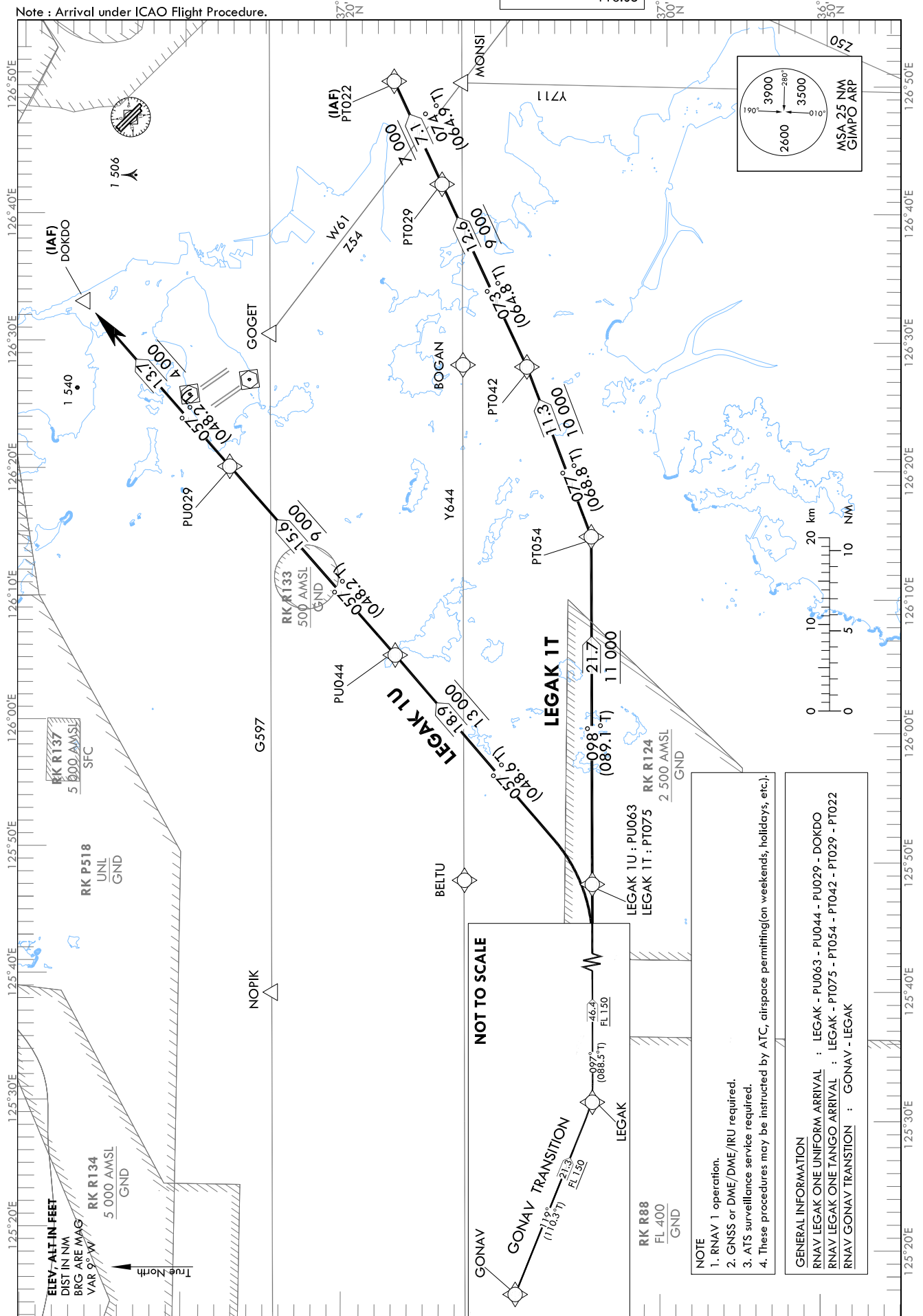
STANDARD ARRIVAL CHART
INSTRUMENT (STAR) - ICAO

TRANSITION ALT 14 000
TRANSITION LVL FL 140

SEOUL APP 119.75
119.1
GIMPO TWR 118.1
118.05

SEOUL/Gimpo Intl(RKSS)
RWY 14L/R, RWY 32L/R
RNAV LEGAK 1U, RNAV LEGAK 1T

Note : Arrival under ICAO Flight Procedure.



Change : Page control.

SEOUL/Gimpo Intl(RKSS)
RWY 14L/R, RWY 32L/R
RNAV LEGAK 1U, RNAV LEGAK 1T,
RNAV GONAV TRANSITION

AERONAUTICAL DATA TABULATION

Standard Instrument Arrival Procedure Coding Tables

Serial Number	Path Descriptor	Waypoint Identifier	Fly-over	Course/Track °M(°T)	Distance (NM)	Turn direction	Altitude (ft)	Speed (kt)	Coordinates	VPA/RDH	Navigation specification	Remarks
001	IF	LEGAK	-	-	-	-	+FL 150	-	37°03'21.0"N 124°49'51.1"E	-	RNAV 1	-
002	TF	PU063	-	097 (088.5)	46.4	-	+FL 150	-	37°04'17.6"N 125°47'50.3"E	-	RNAV 1	-
003	TF	PU044	-	057 (048.6)	18.9	-	+13 000	-	37°16'44.9"N 126°05'33.1"E	-	RNAV 1	-
004	TF	PU029	-	057 (048.2)	15.6	-	+9 000	-	37°27'10.1"N 126°20'12.3"E	-	RNAV 1	-
005	TF	DOKDO	-	057 (048.4)	13.7	-	+4 000	-	37°36'17.1"N 126°33'07.1"E	-	RNAV 1	IAF

Serial Number	Path Descriptor	Waypoint Identifier	Fly-over	Course/Track °M(°T)	Distance (NM)	Turn direction	Altitude (ft)	Speed (kt)	Coordinates	VPA/RDH	Navigation specification	Remarks
001	IF	LEGAK	-	-	-	-	+FL 150	-	37°03'21.0"N 124°49'51.1"E	-	RNAV 1	-
002	TF	PT075	-	097 (088.5)	46.4	-	+FL 150	-	37°04'17.6"N 125°47'50.3"E	-	RNAV 1	-
003	TF	PT054	-	098 (089.1)	21.7	-	+11 000	-	37°04'34.8"N 126°14'54.2"E	-	RNAV 1	-
004	TF	PT042	-	077 (068.8)	11.3	-	+10 000	-	37°08'40.3"N 126°28'06.7"E	-	RNAV 1	-
005	TF	PT029	-	073 (064.8)	12.6	-	+9 000	-	37°14'00.7"N 126°42'19.8"E	-	RNAV 1	-
006	TF	PT022	-	074 (064.9)	7.1	-	+7 000	-	37°17'00.6"N 126°50'21.9"E	-	RNAV 1	IAF

Serial Number	Path Descriptor	Waypoint Identifier	Fly-over	Course/Track °M(°T)	Distance (NM)	Turn direction	Altitude (ft)	Speed (kt)	Coordinates	VPA/RDH	Navigation specification	Remarks
001	IF	GONAV	-	-	-	-	-	-	37°10'48.4"N 124°24'52.6"E	-	RNAV 1	-
002	TF	LEGAK	-	119 (110.3)	21.3	-	+FL 150	-	37°03'21.0"N 124°49'51.1"E	-	RNAV 1	-

Change : Page control.